

WINTER 2016

RIGA

THE OFFICIAL PUBLICATION OF THE RHODE ISLAND GOLF ASSOCIATION



Hall of Fame Induction p.4

by Paul Kenyon

2015 in Review

Changes to the Rules of Golf

111th Amateur
Championship
at Pt. Judith Country Club
June 27-July 1!

97th Women's Amateur
Sakonnet Golf Club,
June 20-24!



FEATURES

- 1
About the RIGA
- 2
A Message from the Executive Director
- 3
A Message from the President
What's to come in 2016
- 4
RI Hall of Fame
Recap of the night at Kirkbrae CC
- 5
RIGA Recognition & Appreciation Night Wrap Up
Honoring our volunteers, members and champions
- 6
Rules of Golf
A brief look at the changes in 2016

- 7
Anchoring the Putter
- 8
Handicap Changes
- 9
2015 Wrap up
Looking back on a year of progress and growth
- 10-13
Championship Results
Men's, Women's and Junior's results
- 14-15
2016 Weekly Invitational Packages & Sign up
- 16
2016 Preview
A look at what's to come this summer



- 17
Men's Tournament Schedule
- 18
Women's Tournament Schedule



About RIGA

The Rhode Island Golf Association is a non-profit organization of private and public clubs and courses dedicated to the service of golf in Rhode Island. Founded in 1902, our primary mission is to promote and preserve the traditions of the game of golf in the State of Rhode Island.

EXECUTIVE BOARD

The Rhode Island Golf Association is governed by an Executive Board which is comprised of a representative from each member club. An operating committee formulate policies and directives for the Executive Director and staff to implement and manage.

2016 OPERATING COMMITTEE

- President – Dr. Vincent J. Cavallaro, Kirkbrae CC
- 1st Vice President – Michael A. Montigny, Valley CC
- 2nd Vice President – Kevin W. Clary, Potowomut CC
- Secretary – Kevin S. McLoughlin, Montaup CC
- Treasurer – Peter F. McBride, Triggs Memorial GC
- Immediate Past President – Luke T. Hyder, Wanutemotomy G&CC

ADMINISTRATION

- Robert Ward
Executive Director
401-272-1350 | rward@rigalinks.org
- Jim McKenna
Director of Rules & Competitions
401-272-1350 | jmckenna@rigalinks.org
- Katie DeCosta
Director of Women's Golf & Member Services
401-272-1350 | kdecosta@rigalinks.org
- Kate McCurry
Office Manager
401-272-1350 | kmccurry@rigalinks.org
- Tyler Malo
Managing Director of Communications and GHIN Services
401-272-1350 | tmalo@rigalinks.org
- One Button Hole Drive, Providence, RI 02909
tel: 401-272-1350 | rward@rigalinks.org

A Message from the Executive Director



Bob Ward

As the RIGA prepares for its 114th golf season I would like to thank everyone involved who helped and supported the association during the 2015 season – member clubs, their boards, golf pros, superintendents, support staff, members, volunteers and players.

The RIGA had a successful year and contributed \$310,000 back to its

member clubs. In my opinion a tremendous amount of funds being given back to member clubs and a consistent source of revenue that everyone is looking for these days.

The RIGA continues to grow with the addition of Tyler Malo as the Manager of Communications and GHIN Services. Tyler served as the USGA's Boatwright Intern for the previous two seasons. He graduated from URI last May and is a great addition to the staff of the RIGA.

RIGA championships, weekly invitational's and women's events continue to drive the growth of the association. The schedule has become a multiple event program for golfers from early May each year to early October. The success of RIGA events is directly connected to member clubs and their members. On either Monday or Tuesday the RIGA has close to 400 members playing golf at various courses. In my eyes this is an amazing statistic that shows the upside to RIGA events.

Congratulations to all the 2015 RIGA champions, all that competed and the newest class of inductees of the Rhode Island Golf Hall of Fame. The evening at Kirkbrae was a special night as 310 guest attended and welcomed Joe Prisco, Tom Dreenan,

JT Tanner, Helen Waterhouse Palmer and Charlie Blanchard into the Hall of Fame.

Registration for 2016 RIGA events is already underway. The season is highlighted by the three biggest events of the season, Amateur Championship at Point Judith CC, Women's Amateur at Sakonnet GC and the Junior Amateur at Pawtucket CC.

This season we will also have a couple of member clubs host outside events that will bring golf recognition to the state. As always the Northeast Amateur will be played the third week of June at Wannamoisett CC. The field is comprised of the next group of players on the PGA Tour. For the 18th year in a row RICC will host the CVS Charity Classic. This event over its time has become one of the largest contributors of fund to charity on the PGA Tour. Also being held at Wannamoisett in August will be the PGA of America Junior Championship. The best 72 boys and 72 girls from around the country will compete to win what is equivalent to the PGA Championship for juniors.

As always the RIGA must support our charitable partners in golf. Button Hole, the Burke Fund and the RIWGA Junior program are all valuable assets to the golfing community.

Please feel free to either contribute or volunteer to one or more of our partners to keep the wonderful game of golf viable in the future.

Hope to see you all at an RIGA event during the upcoming season.

A Message from the President



Dr. Vincent J. Cavallaro

It is my greatest honor to address you as President of the Rhode Island Golf Association for 2016. I am looking forward to assisting our great staff to make your 2016 golf season as rewarding as possible. I am truly humbled and fortunate to be your President.

I am sure with such a great Operating Committee consisting of Past President Luke Hyder, 1st Vice President Mike Montigny, 2nd Vice President Kevin Clary, Secretary Kevin McLoughlin and Peter McBride as Treasurer, we have the leadership necessary to have a very successful season.

With Bob Ward leading our staff of Jim McKenna, Kate McCurry, Katie DeCosta and Tyler Malo this will be a year of great anticipation. I would appreciate if everyone would treat our staff with the greatest courtesy. They work very hard to make your golf a pleasurable experience.

Our Major Tournament Schedule includes some of the best golf venues in Rhode Island. The Men's State Amateur will be played in late June at Point Judith Country Club, a classic venue, the

Men's Four-Ball will be hosted by both Newport National Golf Club and Carnegie Abbey, and the Women's State Amateur will be held at Sakonnet Golf Club, a real gem.

Do not forget the Weekly Invitational Program, which will include Shelter Harbor Golf Club in two separate packages. Bob Ward has worked very hard to get all of the scheduling done. So remember, we can use all your help with your clubs to ensure we can continue to offer you the best venues. Thank you for your anticipated support.

Please do not forget about the USGA rule changes in the Rules of Golf and the Rules of Amateur Status for 2016. If you join the USGA membership they will send you a Rules of Golf book. Also, all of our Vice Presidents are given new Rules of Golf books when they volunteer at RIGA tournaments. Please consider contacting Jim McKenna to let him know which tournaments you would like to volunteer at.

Finally, as your President I am looking forward to meeting all of our members and I am always ready to hear your suggestions to make our tournaments better.





RI Golf Hall of Fame and RIGA Recognition & Appreciation Night

By Paul Kenyon

LINCOLN _ Old fashioned school spirit and a sense of family togetherness were the major themes at the 2015 RI Hall of Fame induction ceremonies.

More than 300 people attended the annual year-end dinner at Kirkbrae Country Club, the home of incoming president Dr. Vincent Cavallaro. The session served as the annual awards dinner recognizing the year’s best, led by Jamie Lukowicz and Susie Cavanagh, the players of the year.

For the first time in four years, it also included Hall of Fame inductions. Those ceremonies will be remembered for the themes of school spirit and sense of family pride that developed from the speeches made by the honorees.

The school spirit came courtesy of three of the new Hall of Famers, all college golf coaches. They included Charlie Blanchard, who has been the best player in the association to this point in the 21st century. Blanchard also is the Bryant University golf coach.

He was the kid among the college coaches. Also honored were Tom Drennan, who in his 22 years as URI coach built the

Rams into the dominant team in New England, and Joe Prisco, who directed the Providence College program for a half century and was the only coach in the sport in school history.

Others enshrined were the late Mike Bobel and Helen Waterhouse Palmer, both former state champions and Jim `JT` Tanner, the long time caddie master at Pawtucket Country Club who was honored in the Distinguished Service category.

Bill Lunnie, who stepped down this year as chairman of the selection committee, a position he held since the committee was formed in 2000, received a special award and so did Luke Hyder, who was completing his term as association president.

The mood for the evening was set by the new president, Doctor Cavallaro, who spoke about how the integrity and honor of the game meant so much to everyone in the room. The theme continued throughout with one of the highlights provided by the Prisco family.

Joe Prisco was recognized for his work as PC coach from 1948 to 2012. From 1965 on, his teams compiled a 389-108-1 record. His teams qualified eight times for the NCAA Tournament. Prisco also served on numerous committees, including the District 1 NCAA selection committee and the NCAA All-

American selection committee. He was inducted into the Golf Coaches Hall of Fame in 1987.

He and Bob Ward, the RIGA’s executive director, both spoke about how Prisco also was one of the founding members of the Triggs Inner Club in the 1930s. Ward also introduced another of the founding members of the Triggs Inner Club who also was at the dinner, Prisco’s older brother, Arthur. Arthur Prisco recently celebrated his 100th birthday. Both brothers continued to play golf well into their 90s.

While Prisco was putting together his successful program at PC, Drennan was doing much the same at URI. Drennan’s teams made 16 straight appearances in the NCAA Regionals. Drennan was named New England coach of the year nine times and Atlantic 10 coach of the year three times.

While he was doing it, he not only handled his own team, he became one of the leading voices nationally for college golf. He not only served on the board of the national organization, he became president from 2003-05, which brought on work that included coaching the United States team in international competition. Drennan did so much for the organization that he was elected to its Hall of Fame in 2008.

Drennan was diagnosed with Parkinson’s Disease five years ago but continues to be involved in URI athletics, including as an off-court worker at men’s basketball games. With all 10 of his grandchildren in the audience he gave a moving acceptance speech about the joys of working with his players and his fight to remain active through his illness.

The third college coach, Blanchard, was not at the dinner because of his continued playing excellence. Blanchard recently turned 50, making him eligible for the Champions Tour. He took advantage of the rule that allows amateurs to take part in qualifying tournaments without giving up their amateur status.

Playing in Scottsdale, AZ., Blanchard had solid rounds of 73-72-70-72 but did

not earn a spot on tour which will allow him to remain the head coach at Bryant University. He gave a taped acceptance speech in which he emphasized the many friendships he has made through RIGA competition.

Blanchard has won the RIGA Amateur Championship twice; the Stroke Play four times; the Mid-Amateur seven times; the Burke Championship five times; the Four-Ball Championship twice and Player of the Year seven times. He has also participated in several regional and national championships, including the USGA Amateur, Mid-Amateur and State Team Championships. In 2002 he completed a championship sweep, winning all five RIGA major championships during that season.

The sense of family in the association came through loud and clear with the inductions of both Bobel and Tanner.

Bobel joins his daughter, Betty June Bobel Stapleton, in the Hall, joining Paul and Brett Quigley as the only two generation families in the Hall. Bobel has the distinction of having won what were the four major championships in his era, taking the 1925 RIGA Caddie Championship, the 1926 RIGA Junior Championship, the 1933 Amateur and, after turning pro, the 1933 and 1934 Rhode Island Open Championships. His grandson, Toby Stapleton, accepted the Hall of Fame Award.

Tanner was there with a large delegation from his extended family, the members of Pawtucket Country Club. Tanner has served the members at Pawtucket since 1952, beginning as a caddie and then moving on to become caddie master. He treated generations of caddies with kindness and respect while instilling important life lessons in creating a strong work ethic, honesty, and reliability. He was inducted into the national Caddie Hall of Fame in 2009. A tournament in his honor is held each year to benefit the Burke Scholarship Fund.

Waterhouse had a short but brilliant career in Rhode Island Women’s play in the 1930s and 1940s. She became the youngest person, man or woman, ever

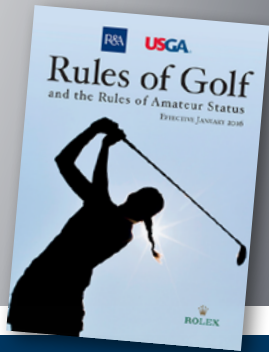
to win a State Amateur title when she captured the RIWGA crown at age 14 in 1932. That began a run of five championships in an eight-year period.

She also had considerable success competing out of state. Among other performances, she defeated the legendary Glenn Collett Vare, 1 up, in the semifinals of the Griswold Cup, major event for women held at Shennecosset in Connecticut. When she married, Palmer moved to Ohio where she won numerous titles, including the Columbus Country Club title 18 times. She was the secretary emeritus of the Board of the Ohio Osteopathic Association at the time of her death in 1998 at age 80.



2016 EDITION OF THE RULES OF GOLF: What You Need to Know

Visit randa.org/rules or usga.org/rules for more information.

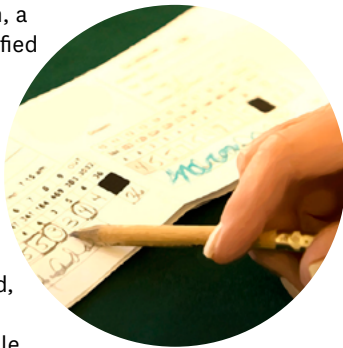


The new Rules take effect Jan. 1, 2016. Here are the four primary changes:

Rule 6-6d

Limited Exception to Disqualification Penalty for Submission of Incorrect Score Card

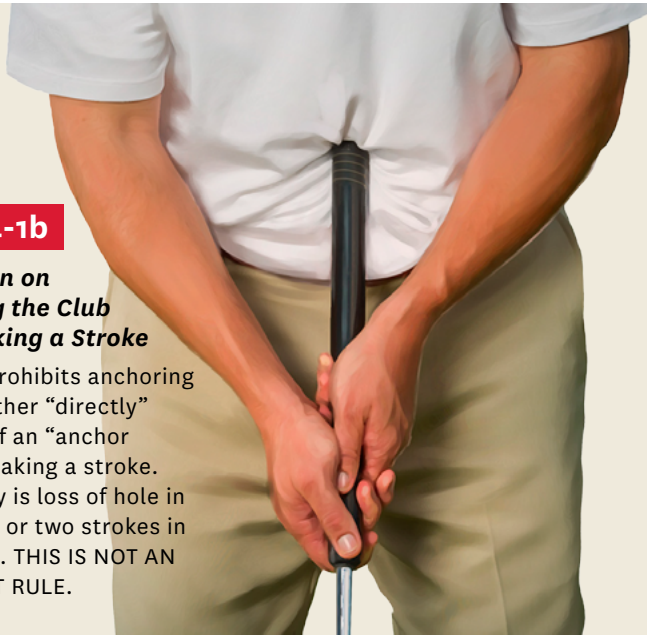
In this new exception, a player is not disqualified for returning a lower score for a hole than actually taken as a result of failing to include penalty strokes that the player did not know were incurred. Instead, the player incurs the penalty under the Rule that was breached and must add an additional penalty of two strokes for the score card error. In all other cases in which a player returns a score for any hole lower than actually taken, the penalty will continue to be disqualification.



Rule 14-1b

Prohibition on Anchoring the Club While Making a Stroke

This Rule prohibits anchoring the club either “directly” or by use of an “anchor point” in making a stroke. The penalty is loss of hole in match play or two strokes in stroke play. THIS IS NOT AN EQUIPMENT RULE.



Rule 18-2b

Withdrawal of Rule on Ball Moving After Address

This Rule assessed a one-stroke penalty if a ball at rest moved after it was addressed. Now a one-stroke penalty will be applied only when the facts show that the player has caused the ball to move.



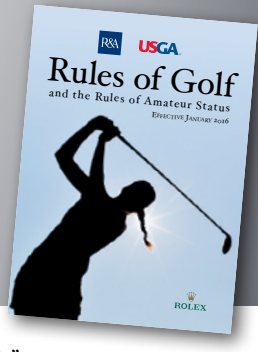
Rule 14-3

Modification of Penalty for a Single Impermissible Use of Artificial Devices or Equipment

The penalty for a player's first breach during the round has been reduced from disqualification to loss of hole in match play or two strokes in stroke play. The penalty for any subsequent breach of Rule 14-3 will continue to be disqualification.



2016 EDITION OF THE RULES OF GOLF: Anchoring the Club — Understanding Rule 14-1b



WHAT CHANGES?

The new entry—**Rule 14-1b**—prohibits strokes made with the club or a hand gripping the club held directly against the player's body or with a forearm held against the body to establish an anchor point that indirectly anchors the club.

WHAT THE RULE SAYS

In making a stroke, the player must not anchor the club, either “directly” or by use of an “anchor point.”

NOTE 1:

The club is anchored “directly” when the player intentionally holds the club or a gripping hand in contact with any part of his body, except that the player may hold the club or a gripping hand against a hand or forearm.

NOTE 2:

An “anchor point” exists when the player intentionally holds a forearm in contact with any part of his body to establish a gripping hand as a stable point around which the other hand may swing the club.

THIS IS NOT AN EQUIPMENT RULE — Conforming mid-length and long putters remain permissible provided they are not anchored.

PERMITTED

CLAW



CROSS-HANDED



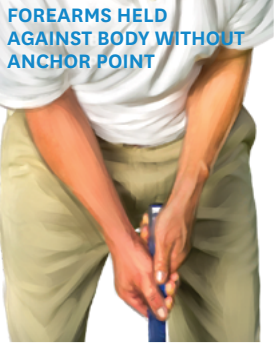
LONG PUTTER NOT ANCHORED



TRADITIONAL GRIP



FOREARMS HELD AGAINST BODY WITHOUT ANCHOR POINT



MID-LENGTH PUTTER NOT ANCHORED



ONE OR BOTH ELBOWS BRACED AGAINST BODY



GRIP RESTING AGAINST FOREARM



PROHIBITED

MID-LENGTH PUTTER ANCHORED AGAINST STOMACH



ANCHORED LONG PUTTER



ANCHOR POINT CREATED BY FOREARM



Penalty
Anchoring the club in making a stroke brings a two-stroke penalty in stroke play and loss of hole in match play (as with any other breach of Rule 14-1).

END OF CLUB ANCHORED AGAINST CHIN





USGA Handicap System Changes

Section 2

- Amended the definition of “Par” using the term scratch golfer
- Amended the definition of “Score Type” by removing Internet (I)
- Amended the definition of “Tournament Score” to clarify that T-Scores need to be significant events

Section 4-2

- Amended heading to: Holes Not Played or Not Played Under the Rules of Golf

Section 5-1a

- Amended wording for Section 5-1a to eliminate “Principles” of as tied to the Rules of Golf

Section 5-1d

- Amended to improve clarity and provide examples for whether a score is acceptable for handicap purposes if a player has been disqualified

Section 5-1e

- Added reference to a multiple breach of Rule 14-3, playing alone, and intentional breach of a Rule as an unacceptable score
 - (v) When a player uses non-conforming clubs, non-conforming balls, or tees; or when a player incurs a second breach of Rule 14-3.
 - (vi) When a player plays alone;
 - (vii) When a player ignores one or more Rules of Golf and fails to post an adjusted hole score as required under Section 4-1 and 4-2, or fails to record the appropriate penalty for a breach of rule. For example, If a player anchored the club while making a stroke during a round and did not record a penalty for doing so (See Rule 14-1b), the score would not be reflected as playing under the Rules of Golf and therefore would be unacceptable for handicap purposes.

Section 6-3

- Amended accessibility of scoring records

Section 8-4c(iii)

- Amended so temporary and permanent disability modifications will be required to be displayed with an “M”

Section 9-5

- Added new subsection, Flights

Section 9-6

- Moved “How to Decide Ties in Handicap Competitions” to Section 9-6

Decisions and Appendices

- Decision 4-2/1, Explanation of “Holes Not Played” under “The Rules of Golf” in accordance with the USGA Handicap System (REVISED)
- Decision 4-2/2, Procedure for Applying Section 4-2 for a Player with a Plus Course Handicap™ (NEW)
- Decision 5-1a/2, Scores Made When Playing Alone (REMOVED)
- Decision 5-1e/2, Scores Made Using a Distance-Measuring Device or Multi-Functional Device (REVISED)
- Decision 5-1e/3, Scores Made using an Artificial Device, Unusual Equipment, or use of any Equipment in an Abnormal manner (REVISED)
- Decision 6-1/1, Procedure for Player who Discontinues Playing Golf for Lengthy Period and Then Resumes Playing (REVISED)
- Decision 8-4c/1, Treatment of Player with Temporary Disability (REVISED)
- Decision 8-4c/2, Treatment of Player with Permanent Disability (REVISED)

Appendix E

- Revised table

2015 Wrap Up

The summer of 2015 was a great one for golf in the RIGA. 2015 marks the second full season of the merger between the RIWGA and the RIGA. Katie DeCosta, the Director of Women Golf & Member Service, has continued where she left off in 2014. Once again, the RIGA is pleased with the direction that the RIWGA merger has gone over the past two years.

Though there was much success in regards to golf during the summer, there was a particularly large setback that was unavoidable. Mother Nature was one of the biggest obstacles that the RIGA encountered throughout the summer, as she seemed to enjoy raining on several Tuesday’s. With some delays and postponements of play, Bob Ward and staff were able to shuffle around most of the rainy days in order to complete tournaments.

Men’s Player of the Year, Jamie Lukowicz, did not succumb to Mother Nature as he had a breakout 2015 season. Lukowicz played a great summer of golf leading him to not only win Player of the Year, but the Joseph J. Sprague Scoring Average title as well. Highlighting Jamie’s summer was a semifinalist spot in the State Amateur, a fourth place finish in the Stroke Play Championship and a runner up finish in the John P. Burke Gross Tournament. The staple of Lukowicz’s summer was a win at the end of the summer at Ledgemont Country Club in the Mid-Amateur Championship. He was able to defend his championship in a close battle with Bobby Leopold, finishing four under for both days. Jamie hopes to continue his fine play into 2016 as he defends his Player of the Year honors.

On the women’s side of the Association, Susie Cavanagh successfully defended her Women’s Player of the Year title. With back to back Player of the Year honors, Susie has once again proven that she is one of the dominant forces in women’s golf in Rhode Island. Her 2015 season was highlighted with a win in the Women’s Stroke Play Championship and a runner up spot in the Women’s State Amateur Championship. She also qualified for a spot and played in the 2015 U.S. Women’s Amateur in Portland, Oregon. Susie and partner Tom Acciaro won the Mixed Foursomes Championship to finish out summer tournament play. Like Lukowicz, Susie will be back to defend her honors in 2016.

The RIGA Junior players also had a great year in competition. Davis Chatfield finished Junior Amateur Qualifying as the three seed. From this spot he entered Match Play where he was able to beat the defending champion in the semifinal. After knocking off the defending champ, he went on to win the 2015 Boys Junior Amateur Championship. Chatfield also had a great performance at the State Amateur Championship where he qualified for Match Play, but came up short when he faced multiple-time State

Amateur Champion and newly inducted Hall of Famer, Charlie Blanchard, in the Round of 16. The Girls Junior Amateur Champion, Alexis Florio, had a dominating performance in the Junior Amateur. Though she started off as the two seed, she flew through the bracket to meet Allison Paik, the one seed, to pull out a championship victory in the finals.

The Rhode Island Juniors had some great individual performances throughout the summer. Patrick Welch also had a spectacular performance in the State Amateur Championship. Welch finished Stroke Play Qualifying as the Medalist shooting five under. One of the biggest stories in Rhode Island Junior golf was their team play in the New England Junior Invitational in Cape Elizabeth, ME. For the tournament, Team Rhode Island finished at twenty over which led them to a large margin of victory. This victory was the first in nearly a decade for the Rhode Island Junior team. The last win for Team Rhode Island was in 2005. The championship team of Jesse Boog, Davis Chatfield, Jeffrey Giguere, Riley Griffin, Sam Knowlton, Joe Tucker and Patrick Welch brought the New England Junior Invitational trophy back to Rhode Island to finish off a successful summer of golf in Rhode Island.



MEN'S CHAMPIONSHIP RESULTS

17th John P. Burke Memorial Gross Division

May 5-6: Newport CC & Wanumetonomy G&CC

1	Brendan Lemp	The Misquamicut Club	67-70--137
2	Jamie Lukowicz	Metacomet CC	69-70--139
3	Ryan Pelletier	Pawtucket CC	71-69--140
T4	Charlie Blanchard	Wannamoisett CC	72-72--144
	Kevin Blaser	Metacomet CC	68-76--144

17th John P. Burke Memorial Net Division

May 12-13: The Misquamicut Club/Shelter Harbor GC

1	Richard Leary	Triggs Memorial GC	64-64--128
2	Ronald Resmini	Rhode Island CC	61-68--129
3	Anthony Caprio	Melody Hill GC	62-71--133
4	Michael Botelho	Montaup CC	67-67--134

22nd Ed Perry Senior Four-Ball Championship - Net Division

May 18-19: Crestwood CC

T1	**Tom Izzo & Tom Randall**		64-61--125
	Mark Krieger & Marty Lightbown		60-65--125
3	Curt D'Aguanno & Matt Mainelli		62-66--128
	Won on third playoff hole		

115th U.S. Open - Local Qualifying - Cranston, R.I.

May 19: Alpine CC

T1	Matthew Doyle	The Misquamicut Club	70-70--140
	Michael Capone		70-70--140
T3	Camiko Smith	Belmont Hills GC	71-71--142
	John Elliott	Shelter Harbor GC	71-71--142
	Jason Thresher	Crestview CC	71-71--142
	Michael Buttacavoli		71-71--142

22nd Ed Perry Senior Four-Ball Championship - Gross Division

May 26-27: Warwick CC

1	Tom Acciardo & Dr. George Pirie	66-65--131
2	Gary McLane & Dave Patrick	65-67--132
3	Paul Quigley & Mike Soucy	67-67--134
4	Mark Jones & Dale Smith	67-68--135

66th Four-Ball Championship

June 9-10: Connecticut National GC & Quinnatisset CC

1	Tyler Cooke & Bobby Leopold	59-60--119
T2	Rick Audette Jr & Jason Kalin	68-64--132
	Kyle Hoffman & Ryan Pelletier	65-67--132

Mixed Stroke Play Championship

June 16: Pawtucket CC

1	Patrick Welch & Kay Bullock	66
T2	Scott Macleod & Angel Macleod	71
	John Pellegrino Jr & Jo-Ann Pellegrino	71

54th Northeast Amateur Invitational

June 24-27: Wannamoisett CC

1	Hunter Stewart	69-66-66-65--266
2	Kyle Jones	69-66-72-63--270
T3	Scottie Scheffler	67-67-70-68--272
	Zachary Bauchou	71-65-66-70--272

110th Amateur Championship

July 13-17: Metacomet CC

Qualifying Results			
1	Patrick Welch	Metacomet CC	67-68--135
2	Bobby Leopold	Wannamoisett CC	73-64--137
T3	Ryan Pelletier	Pawtucket CC	67-71--138
	Davis Chatfield	Wannamoisett CC	69-69--138

Quarterfinals			
Kevin Silva, Montaup CC (16) def. Seamus Fennelly, Metacomet CC (25), 1 up			
Rob Grossguth, West Warwick CC (28) def. Charlie Blanchard, Wannamoisett CC (13), 20 holes			
John Jackopsic, Meadow Brook GC (7) def. Tom McCormick, Kirkbrae CC (31), 4 & 3			
Jamie Lukowicz, Metacomet CC (6) def. Jeffrey Giguere, Wannamoisett CC (19), 1 up			

Semifinals			
Kevin Silva, Montaup CC (16) def. Rob Grossguth, West Warwick CC (28), 1 up			
John Jackopsic, Meadow Brook GC (7) def. Jamie Lukowicz, Metacomet CC (6), 21 holes			

Finals			
Kevin Silva, Montaup CC (16) def. John Jackopsic, Meadow Brook GC (7), 6 & 5			

32nd Stroke Play Championship

July 28: Green Valley CC

1	Brad Valois	Metacomet CC	70-67--137
T2	Bobby Leopold	Wannamoisett CC	70-68--138
	Jake Bauer	Montaup CC	71-67--138
4	Jamie Lukowicz	Metacomet CC	73-69--142

84th Rhode Island Open Championship

August 4-6: Agawam Hunt

1	Patrick Pelletier	Lebanon, NH	68-64-66--198
2	Michael Welch	Granite Links	66-67-66--199
T3	Matthew Campbell	Teugega CC	63-70-69--202
	Matthew Dubrowski	Bergenfield, NJ	70-65-67--202

75th Mixed Foursomes Championship

August 24-26: Warwick CC

Championship Division	
Tom Acciardo (Agawam Hunt) & Susan Cavanagh (Agawam Hunt) def. Rick Angeli (Potowomut GC) & Gina Bartolotta, 3 & 2	

First Division	
Rick Bernard (Triggs Memorial GC) & Virginia Bernard (Quidnessett CC) def. Kevin Clary (Potowomut GC) & Jen Kosh (West Warwick CC) 4 & 3	

Second Division	
Brendan McLaughlin (Potowomut GC) & Karen McLaughlin (Point Judith CC) def. Ken Benson (Pinecrest GC) & Cissy Grady (Pinecrest GC) 1 up	

22nd Mid-Amateur Championship

August 31-September 1: Ledgemont CC

1	Jamie Lukowicz, Metacomet CC	69-69--138
2	Bobby Leopold, Wannamoisett CC	72-67--139
3	Rick Audette Jr, Metacomet CC	67-73--140
T4	Brad Valois, Metacomet CC	68-73--141
	Ryan Pelletier, Pawtucket CC	67-74--141
	Kevin Silva, Montaup CC	74-67--141

57th Senior Amateur Championship Net Division

September 15-16: Kirkbrae CC

1	Richard Leary, Triggs Memorial GC	65-74--139
2	Jim Wade, Valley CC	71-70--141
T3	Mark Krieger, Lincoln CC	72-71--143
	Joe Calabro, Kirkbrae CC	69-74--143

57th Senior Amateur Championship Gross Division

September 22-23: Crestwood CC

T1	**Don Wright, West Warwick CC**	72-71--143
	Tom Goryl, Wannamoisett CC	71-72--143
3	Mike Soucy, Valley CC	67-77--144
T4	George Donnell, Quidnessett CC	74-71--145
	Frank Deangelis, Metacomet CC	75-70--145
	Roger Dieffenbach, Swansea CC	73-72--145
	Won on third playoff hole	

2015 Robert Mulligan Interclub Championship

September 24: Valley CC

Team Champions: Crestwood CC – Jon Costa III, Mike Douillette, Douglas Greenslade, Stephen Sampson, Kolby Simmons		
T1	**Crestwood CC**	301
	Metacomet CC	301
3	Potowomut GC	307
4	Warwick CC	309
	Won tiebreaker	

Individual Medalist: Dan Najarian (Potowomut GC)

9th Annual RIGA Weekly Invitational Net Championship

October 13: Metacomet CC

T1	William Taylor, North Kingstown GC	36
	Mark Cifelli, Glocester CC	36
T3	Everett Santos, Fenner Hill GC	34
	Juan Amado, Triggs Memorial GC	34
	*Net Stableford Points Scoring	

82nd Tri-State Matches

October 20-21: TPC Boston

Rhode Island Team: Rick Audette, Charlie Blanchard, Tom Goryl, Kyle Hoffman, Bobby Leopold, Jamie Lukowicz, Dave McNally, Gary Palmer, Ryan Pelletier, Kevin Silva, Brad Valois, Don Wright			
Final Point Totals: Massachusetts (72), Rhode Island (49), Connecticut (41)			

2015 Men's Player of the Year

1	Jamie Lukowicz	Metacomet CC	685
T2	Brad Valois	Metacomet CC	600
	Bobby Leopold	Wannamoisett CC	600
4	Ryan Pelletier	Pawtucket CC	525
5	Kevin Silva	Montaup CC	495

Men's Senior Player of the Year

1	Paul Quigley	Swansea CC	680
2	Dr. George Pirie	Valley CC	460
3	Tom Goryl	Wannamoisett CC	370

WOMEN'S CHAMPIONSHIP RESULTS

Women’s Rhode Island vs. Connecticut

June 4: Alpine CC

Rhode Island (251.5) def. Connecticut (234.5)			
President’s Team			
July 20: Metacomet CC			
Gross			
	Sandy Salvatore, Ledgemont CC & Joyce Cotoia, Ledgemont CC	80	
	Dorothy Hultine, Wannamoisett CC & Jane Geary, Wannamoisett CC	86	
Net			
	Sandy Salvatore, Ledgemont CC & Joyce Cotoia, Ledgemont CC	61	
	Angela Brunero, Potowomut GC & Patricia Florence, Potowomut GC	65	

Women’s Stroke Play Championship

July 27: Montaup CC

Gross			
T1	**Susan Cavanagh, Agawam Hunt**	78	
	Caroline Brown Farber, Agawam Hunt	78	
Won on second playoff hole			
Net			
T1	Kay Bullock, Montaup CC	75	
	Jane Geary, Wannamoisett CC	75	
	Caroline Brown Farber, Agawam Hunt	75	

Women’s Amateur Championship

August 4-7: Potowomut GC

Qualifying Results			
1	Lisa Griffin McGill, The Misquamicut Club	79	
T2	Mia Bartolotta, Potowomut GC	80	
	Susan Cavanagh, Agawam Hunt	80	

Julie Green Cup

Lisa Griffin McGill, The Misquamicut Club def. Susan Cavanagh, Agawam Hunt, 2 & 1

President’s Bowl

Gale Hanna, Wannamoisett CC def. Rebecca Moniz, Potowomut GC, 1 up

Past President's Bowl

Paula Kleniewski, North Kingstown GC def. Patricia Labossiere, Triggs Memorial GC, 4 & 3

Women's Senior Amateur Championship

August 31: Agawam Hunt

Gross			
1	Lisa Griffin McGill, The Misquamicut Club	77	
2	Janet Field, Sakonnet GC	82	
Net			
1	Gale Hanna, Wannamoisett CC	71	
T2	Maura Overlan, Wanumetonomy G&CC	72	
	Jane Lippincott, Wanumetonomy G&CC	72	

Women’s Junior-Senior

September 8: Rhode Island CC

1	Annie Corio & Jane Geary	76	
2	Doreen Martin & Carol Clarey	77	
T3	Nancy Diemoz & Nancy Chaffee	78	
	Rebecca Blough & Joanne	78	

Elizabeth ‘Lib’ McLoughlin Team Championship – Net Division

September 15: Point Judith CC

Team Champions: Triggs Memorial GC - Suzette Gervais, Karen Kutniewski, Carolyn Pacheco, Robin Parella			
1	Triggs Memorial GC	221	
T2	Wannamoisett CC (1)	223	
	Wannamoisett CC (2)	223	

2015 Women's Player of the Year

1	Susan Cavanagh	Agawam Hunt	750
2	Lisa Griffin McGill	The Misquamicut Club	730
3	Kibbie Reilly	Wannamoisett CC	590
4	Nancy Diemoz	Montaup CC	530
5	Angel Macleod	Wannamoisett CC	427

2015 Women’s Net Player of the Year

1	Gale Hanna	Wannamoisett CC	736
2	Jane Geary	Wannamoisett CC	481
3	Kay Bullock	Montaup CC	402

TEAM MATCHES RESULTS

Association Bowl

Crestwood Country Club

Doreen Martin, Laura Nesteriak, Carol Clarey, Linda Oliveira, Terry Howarth, Catherine Parente & Dina Savoie

Baker Bowl

Wanumetonomy G&CC

Peggy Ellis, Dottie Maher, Maggie Moy, Brenda Shore, Diane Germani & Judy Naugle

Fernald Bowl

Glocester CC

Carolyn O'Keefe, Darlene Fafard, Nancy Mende, Kathy Giovine & Collette Bruno

JUNIORS RESULTS

94th Junior Amateur Championship

August 10-14: Valley CC

Boys’ Division

Qualifying Results

- 1 Riordan Holzwarth, Wannamoisett CC 67-67--134
- 2 Patrick Welch, Metacomet CC 69-69--138
- 3 Davis Chatfield, Wannamoisett CC 71-71--142
- 4 Riley Griffin, Rhode Island CC 73-73--146

Championship Division

Quarterfinals

Sam Knowlton, The Misquamicut Club (9)
def. Drew Aitken, Connecticut National GC (16), 3 & 2
Jesse Boog, Wanumetonomy G&CC (13),
def. Kyle McGowan, Wanumetonomy G&CC (5), 4 & 2
Patrick Welch, Metacomet CC (2),
def. Sean Irons, Potowomut GC (7), 3 & 1
Davis Chatfield, Wannamoisett CC (3),
def. Joe Tucker, Potowomut GC (11), 3 & 2

Semifinals

Sam Knowlton, The Misquamicut Club (9),
def. Jesse Boog, Wanumetonomy G&CC (13), 1 up
Davis Chatfield, Wannamoisett CC (3),
def. Patrick Welch, Metacomet CC (2), 2 & 1

Finals

Davis Chatfield, Wannamoisett CC (3),
def. Sam Knowlton, The Misquamicut Club (9), 2 up

First Division

Finals

Eli Epstein-Lubow, Ledgemont CC (10),
def. Claudio Soukamneuth, Potowomut GC (1), 4 & 2

MacColl Cup

Wannamoisett CC

Patti D'Ambrosio, Georgia Allen, Rosemary Rotelli, Jean Giorgio, Sharon Volpe, Paula DeBlois & Betsy McCoy

Rhode Island Cup

Wanumetonomy G&CC

Judith Rosenthal, Nancy O'Neill, Bardee Wyer, Leony Hartig, Jane Lippincott, Maura Overlan & Nancy Cloud

Second Division

Finals

Patrick Chatfield, Wannamoisett CC (2),
def. Ben Morgan, Rhode Island CC (9), 19 holes

Third Division

Finals

James Burke Jr., Potowomut GC (3),
def. Alex Sienkiewicz, Wanumetonomy G&CC (5), 2 up

Girls’ Division

Qualifying Results

- 1 Allison Paik, Providence, RI 77-77--154
- 2 Alexis Florio, Alpine CC 78-78--156
- 3 Courtney Breen, Rhode Island CC 92-92--184
- 4 Addy Douglas, Newport CC 94-94--188

Championship Division

Quarterfinals

Allison Paik, Providence, RI (1), def.
Mackenzie Conley, Wannamoisett CC (8), 8 & 6
Demi Dischert, Crestwood CC (5),
def. Addy Douglas, Newport CC (4), 1 up
Alexis Florio, Alpine CC (2),
def. Lauren Dohoney, Alpine CC (10), 7 & 6
Courtney Breen, Rhode Island CC (3),
def. Marissa Isabella, Kirkbrae CC (6), 6 & 5

Semifinals

Allison Paik, Providence, RI (1),
def. Demi Dischert, Crestwood CC (5), 6 & 4
Alexis Florio, Alpine CC (2),
def. Courtney Breen, Rhode Island CC (3), 8 & 7

Finals

Alexis Florio, Alpine CC (2),
def. Allison Paik, Providence, RI (1), 5 & 3



RIGA

2016 Weekly Invitational Packages

Registration for the 2016 RIGA Weekly Invitationals will be the same process as it has been in recent years. The program is open to all members of a RIGA member club and players are required to sign up as a foursome. The designated captain will be the contact for each group. Captains are asked to ensure that each player join the RIGA member program before the first event. When completing the registration form please include the email address of each player in the group. This will help with communication in the event something changes for a given weekly. The only applications that will be considered are those that arrive via U.S. Postal Service Mail postmarked no earlier than February 22, 2016. Tee times will range from 7:30-1:00. If early groups cannot keep pace the RIGA reserves the right to assign that group a later time.

The Stableford scoring system will again be used in an effort to speed up play for each round. The top 15 players, the highest point totals, from each round will accumulate points toward the Weekly Net Championship (October 17–Crestwood CC). Again, players will collect points for each hole with a net double bogey being the limit. Gift certificates for each weekly will be distributed by GROSS Stableford points within your handicap division. Points for the Weekly Net Championship will still be the top 15 NET Stableford point totals for each weekly. To be eligible for the Weekly Net Championship a player must turn in a card for four of the six weeklies. Players are not obligated to participate in the “point’s race”, but may choose to play in the weekly program on a noncompetitive basis. Groups need to check in with the RIGA representative when ready to play. Any substitute players need to be changed so accurate scoring can take place. All scorecards should be turned into the golf shop once play is complete. The RIGA will again be posting all scores to the GHIN system.

The fee to participate in the Weekly Invitational program packages for 2016 will be \$1500.00 per package or \$375.00 per player and includes cart fees for each event. Credit cards will again be accepted as a form of payment, Visa or MasterCard only. Please complete the registration form completely if a credit card is used as the form of payment. If a group would like to participate in multiple packages please indicate in the check box located on the bottom of the registration form. Packages are distributed on a first come first serve basis and multiple packages will be given out once everyone participating gets one package. The sign-up period will begin on February 22, 2016. Any mail postmarked prior to February 22, 2016 will be returned. No USPS Express Mail will be accepted that was initiated prior to February 22, 2016. “Walk-ins” to the RIGA office are NOT permitted. The RIGA office will inform the captains by mail & e-mail in late March.

One Button Hole Drive, Providence, RI 02909

Package 1

M	April 25	Quidnessett CC
T	May 10	Shelter Harbor GC
T	July 19	Foster CC
T	Aug 2	Metacomet CC
M	Aug 29	Swansea CC
T	Sept 20	Agawam Hunt

Package 2

T	April 26	Pawtucket CC
Th	May 12	The Misquamicut Club
T	June 28	Crestwood CC
T	Aug 9	Fenner Hill GC
M	Sept 19	Wanumetonomy G&CC
T	Sept 27	Point Judith CC

Package 3

M	May 9	Rhode Island CC
M	May 23	Alpine CC
M	June 20	Crystal Lake GC
T	July 12	Wannamoisett CC
T	Sept 6	Potowomut GC
W	Sept 28	Sakonnet GC

Package 4

M	May 2	Ledgemont CC
T	May 17	Potowomut GC
T	May 24	Kirkbrae CC
M	Aug 22	Cranston CC
T	Sept 13	Pawtucket CC
M	Sept 26	Carnegie Abbey

Package 5

W	May 11	Shelter Harbor GC
M	May 16	Agawam Hunt
T	July 5	Valley CC
M	July 25	Montaup CC
M	Aug 15	Laurel Lane CC
T	Oct 4	Warwick CC

Weekly Invitational Net Championship

M	Oct 17	Crestwood CC
---	--------	--------------

2016 RIGA WEEKLY INVITATIONAL APPLICATION

Please clip or copy and mail to the RIGA office not postmarked earlier than Monday, February 22nd.

Packages are \$1500 per foursome per package. Includes cart fees.

Captain's Name _____ Club Affiliation _____

Captain's Email _____ GHIN# _____

Captain's Telephone (day) _____ (eve) _____ (cell) _____

Captain's Address _____

STREETCITY, STATEZIP

Captain's Visa/Mastercard Number _____ (expiration date) _____

Captain's Signature if paying by Credit Card _____

Please include information for additional players.

Player 1 _____ Club Affiliation _____

Email _____ Tel _____ GHIN# _____

Address _____

STREETCITY, STATEZIP

Visa/Mastercard Number _____ (exp date) _____ Signature _____

Player 2 _____ Club Affiliation _____

Email _____ Tel _____ GHIN# _____

Address _____

STREETCITY, STATEZIP

Visa/Mastercard Number _____ (exp date) _____ Signature _____

Player 3 _____ Club Affiliation _____

Email _____ Tel _____ GHIN# _____

Address _____

STREETCITY, STATEZIP

Visa/Mastercard Number _____ (exp date) _____ Signature _____

WRITE PACKAGE NUMBER IN SPACE NEXT TO CORRESPONDING CHOICE

First Choice _____ Second Choice _____ Third Choice _____

TEE TIMES

7:30-7:56 _____ 8:04-8:30 _____ 8:38-9:04 _____ 9:12-9:38 _____ 9:46-10:12 _____

10:20-10:46 _____ 10:54-11:20 _____ 11:28-11:54 _____ 12:02-12:36 _____

Would you like to participate in additional packages? ☐ Yes ☐ No

TO REGISTER: Visit www.rigalinks.org, - [OR](#) -
Mail this completed form and either a check payable to RIGA, or Visa/Mastercard number(s).
If mailing credit card information, please be sure to sign above to authorize credit card payment.

One Button Hole Drive, Providence, RI 02909

Envelopes postmarked prior to Monday, February 22nd, 2016 will be returned unopened.

2016 Preview

Looking ahead to the summer of 2016, there are some big changes in the world of golf. The USGA and the R&A have released an updated version of the *Rules of Golf and the Rules of Amateur Status*. One of the biggest noted rule changes in the Rules of Golf is Rule 14-1b: Prohibition on Anchoring the Club While Making a Stroke. For a more detailed look at this rule change and others, see page 6. Additionally, *The USGA Handicap System* has also made some small changes to its systems and decisions. Highlighting a big revision in the world of golf handicapping can be seen in Section 5-1: Acceptability of Scores, Playing alone and necessary peer review. See page 8 for a recap of information on handicapping topics. These minor tweaks that each received are creating a buzz in the golf community.

The 2016 men's tournament schedule is set and the State Amateur is slated to make a return, after nearly two decades, to Point Judith Country Club. A few highlights for the men this season are

the Rhode Island Open, Senior Amateur Championship, and the Junior Amateur Championship which will be played at Kirkbrae Country Club, Triggs Memorial Golf Course and Pawtucket Country Club, respectively. The Rhode Island Golf Association will host the 83rd meeting of the Tri State Matches which will be held at Rhode Island Country Club.

For the women, their schedule starts with the Women's State Amateur Championship which is being played at Sakonnet Golf Club from June 20th to June 24th. The Women's Stroke Play Championship will be hosted by Alpine Country Club on August 2nd. Wrapping up the women's tournament schedule will be the Women's Senior Amateur at Potowomut, which was host of the 2015 Women's State Amateur Championship, on August 31st.

The Rhode Island Golf Association is heading towards the 2016 season with high hopes for another successful summer.





COME ENJOY A BOTTLE OF
GRANNY SQUIBB'S ICED TEA
AT THE:

- Women's Amateur Championship
- Women's Senior Amateur Championship
- Men's Amateur Championship
- Junior Amateur Championship
- Mid-Amateur Championship
- RI Open Championship





2016 TOURNAMENT SCHEDULE



DATE	TOURNAMENT	CLUB	ENTRIES CLOSE
May 3-4	John P. Burke Memorial (Gross/Net)	Newport CC Wanumetonomy G&CC	4/20
May 9	USGA Open Qualifying	North Kingstown GC	4/27
May 9-10	Senior Four-Ball (Gross Div.)	Alpine CC	4/27
May 17-18	Senior Four-Ball (Net Div.)	Crestwood CC	5/4
May 23-24	Four-Ball Championship	Newport National GC Carnegie Abbey	5/11
May 31	Mixed Stroke Play	Valley CC	5/24
June 1	Amateur Championship Pre-Qualifying	Fenner Hill GC	5/18
June 6	Amateur Championship Pre-Qualifying	Montaup CC	5/18
June 15	Amateur Championship Pre-Qualifying	Cranston CC	5/18
June 22-25	Northeast Amateur	Wannamoisett CC	invitation only
June 27-July 1	Amateur Championship	Point Judith CC	5/18
July 11-12	RIGA Family Day	Metacomet CC	6/29
July 12	USGA Amateur Qualifying	Crestwood CC	6/29
July 19-21	New England Amateur	Hartford GC (CT)	6/16
July 25-26	Stroke Play Championship	Agawam Hunt	7/13
Aug 1-4	Junior Amateur Championship	Pawtucket CC	7/25
Aug 15-17	New England Junior	Cocheeco (NH)	invitation only
Aug 15-16	Mid-Amateur	Metacomet CC	8/3
Aug 23	Mixed Stroke Play	Metacomet CC	8/16
Aug 30-Sept 1	Rhode Island Open	Kirkbrae CC	8/17
Sept 6	USGA Four-Ball Qualifying	Green Valley CC	8/10
Sept 13-14	Senior Amateur (Gross/Net Div.)	Triggs Memorial GC	8/31
Sept 15	Mulligan Interclub Team Championship	Pawtucket CC	9/7
Sept 20-21	New England Seniors	Crestwood CC (RI)	8/18
Sept 28-30	USGA State Team	CC of Birmingham (AL)	invitation only
Oct 8-19	Tri-State Matches	Rhode Island CC (RI)	invitation only

RIGA

2016 WOMEN'S TOURNAMENT SCHEDULE



2016 WOMEN'S AMATEUR
SAKONNET, JUNE 20-24!

DATE	TOURNAMENT	CLUB	ENTRIES CLOSE
May 3	Best Ball of 4	Shelter Harbor GC	4/26
May 11	Best Ball of 2	The Misquamicut Club	5/4
May 17	Best Ball of 2	Kirkbrae CC	5/10
May 23	2 Best Ball of 4	Warwick CC	5/16
May 24	Ryder Cup Day 1	Crestwood CC	5/17
May 31	Mixed Stroke Play	Valley CC	5/24
June 2	RI vs CT	Hartford GC (CT)	5/15
June 6-7	Four-Ball Championship	Wanumetonomy G&CC	5/30
June 14	Ryder Cup – Day 2	Pawtucket CC	6/7
June 20-24	Amateur Championship	Sakonnet GC	6/13
June 27	2 Best Balls Even 1 Best Ball Odd	Montaup CC	6/20
Jun 28-30	NEWGA	CC of Vermont	6/15
July 5	Junior/Senior	Ledgemont CC	6/28
July 11	Best Ball of 4	Quidnessett CC	7/4
July 11	RIGA Family Day Sr. Division	Metacomet CC	6/29
July 12	RIGA Family Day Jr. Division	Metacomet CC	6/29
Aug 1-4	Junior Amateur Championship	Pawtucket CC	7/25
Aug 2	Stroke Play Championship	Alpine CC	7/26
Aug 10	Best Ball of 2	Green Valley CC	8/3
Aug 23	Mixed Stroke Play	Metacomet CC	8/16
Aug 31	Senior Amatur Championship	Potowomut GC	8/24
Sept 6	Best Ball of 2	Newport National GC	8/30
Sept 13	President's Team	Point Judith CC	9/6
Sept 20	Best Ball of 4	Carnegie Abbey Club	9/13
Sept 27	Lib McLoughlin Net Team Championship	Agawam Hunt	9/20
Sep 28-30	Endicott Cup	Tumble Brook CC (CT)	9/15
Oct 4	2 Best Balls of 4	Wannamoissett CC	9/27
Oct 5	Best Ball of 2	Sakonnet GC	9/28
Oct 11	Best Ball of 4	Newport CC	10/4
Oct 17	Best Ball of 2	Rhode Island CC	10/10
July 19 & 26, August 9, 16 & 30	– Team Matches –	various locations	7/1

HURD & Family
Low Price Guarantee

Chevrolet Buick GMC Truck

Over 800 Cars, Trucks & SUVs in one location!

Chris Hurd
Rebecca Hurd

“Where you can send your friends...and family!”



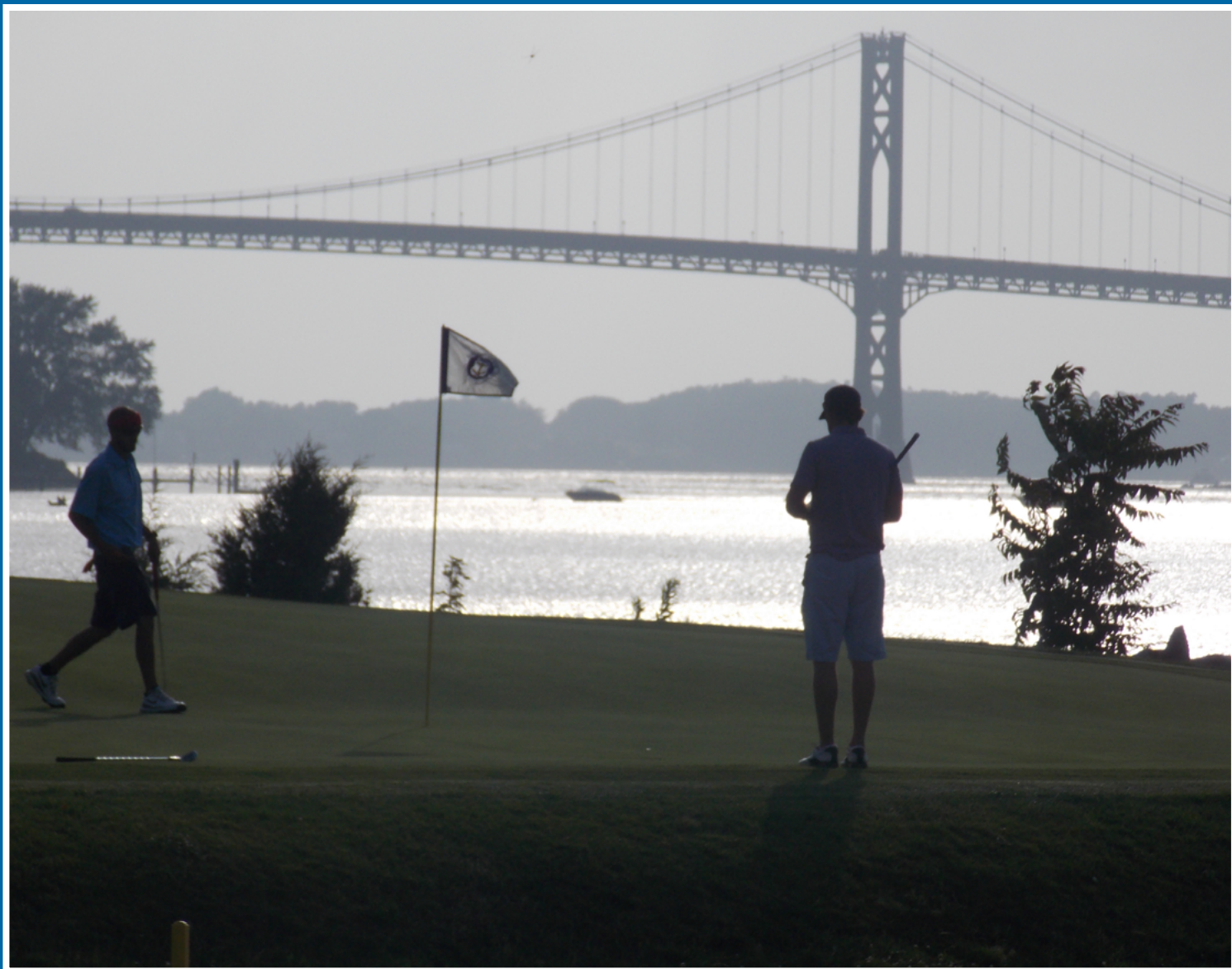
1705 Hartford Avenue, Rte. 6, Johnston, RI 02919 (401) 751-6000 www.HurdautoMall.com

Your Ad Could Go Here.

Advertise your company, product, service or facility in the RIGA newsletter.

For more details, please contact Tyler Malo at 401-272-1350 or tmalo@rigalinks.org.

RIGA



To all of our members and supporters,
thank you for a great 2015 season.
Registration has begun for the upcoming summer and
we are looking forward to another great year.

RIGA
THE OFFICIAL PUBLICATION OF THE RHODE ISLAND GOLF ASSOCIATION